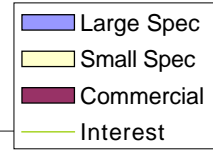
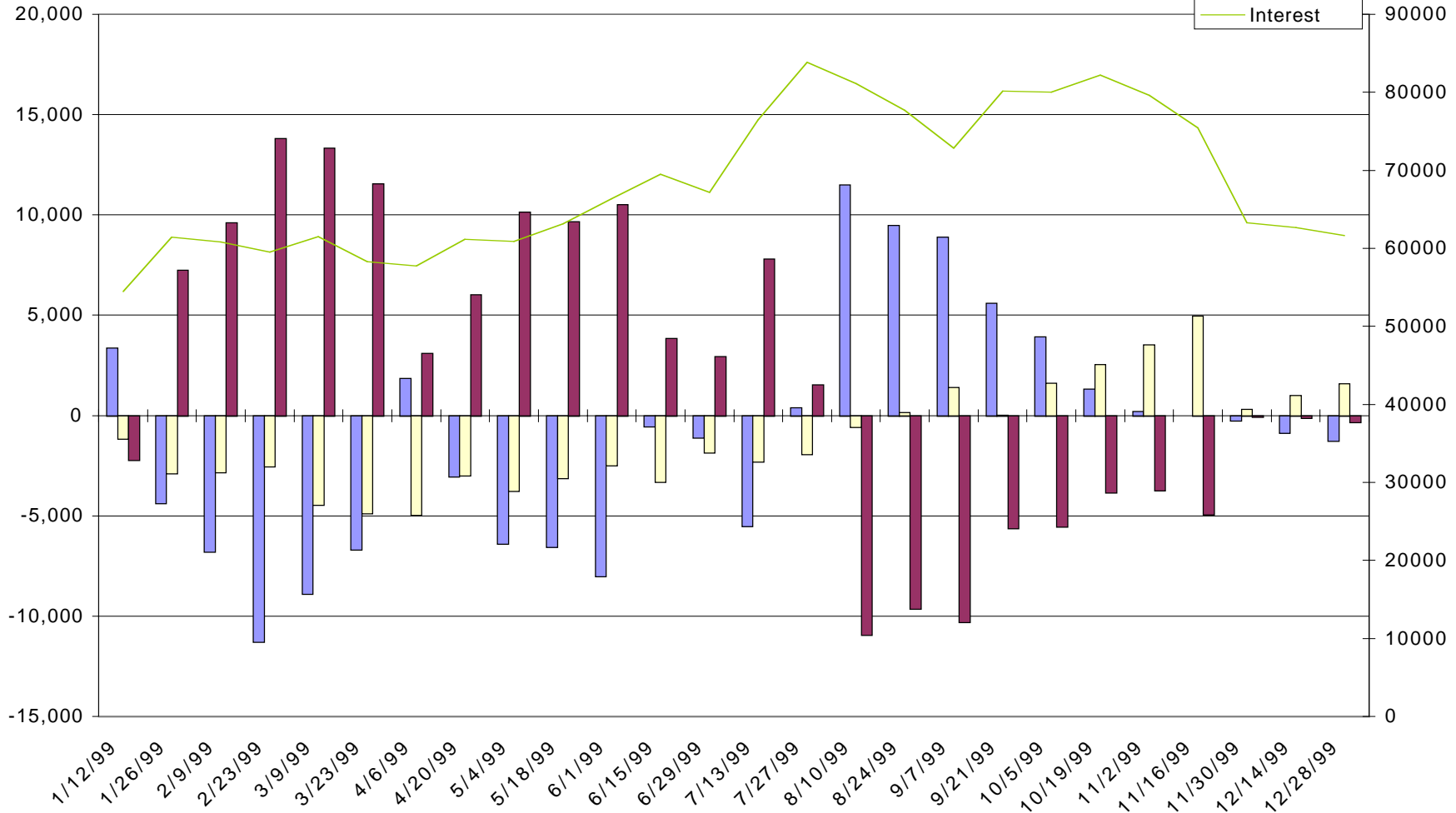


(KW, kcbt) Wheat, Kansas City - Net Commitments of Traders



27



-- Large Speculators --

---- Commercial ----

-- Small Speculators --

Open

	Long	Short	Bullish	Long	Short	Bullish	Long	Short	Bullish	Interest
11/2/99	11,668	11,464	50%	46,160	49,893	48%	19,208	15,679	55%	79,592
11/16/99	9,098	9,122	50%	42,596	47,520	47%	21,840	16,892	56%	75,416
11/30/99	6,495	6,754	49%	41,035	41,092	50%	13,486	13,170	51%	63,252
12/14/99	4,651	5,526	46%	41,717	41,831	50%	14,033	13,044	52%	62,692
12/28/99	4,139	5,394	43%	41,411	41,751	50%	13,901	12,306	53%	61,632