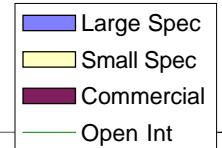
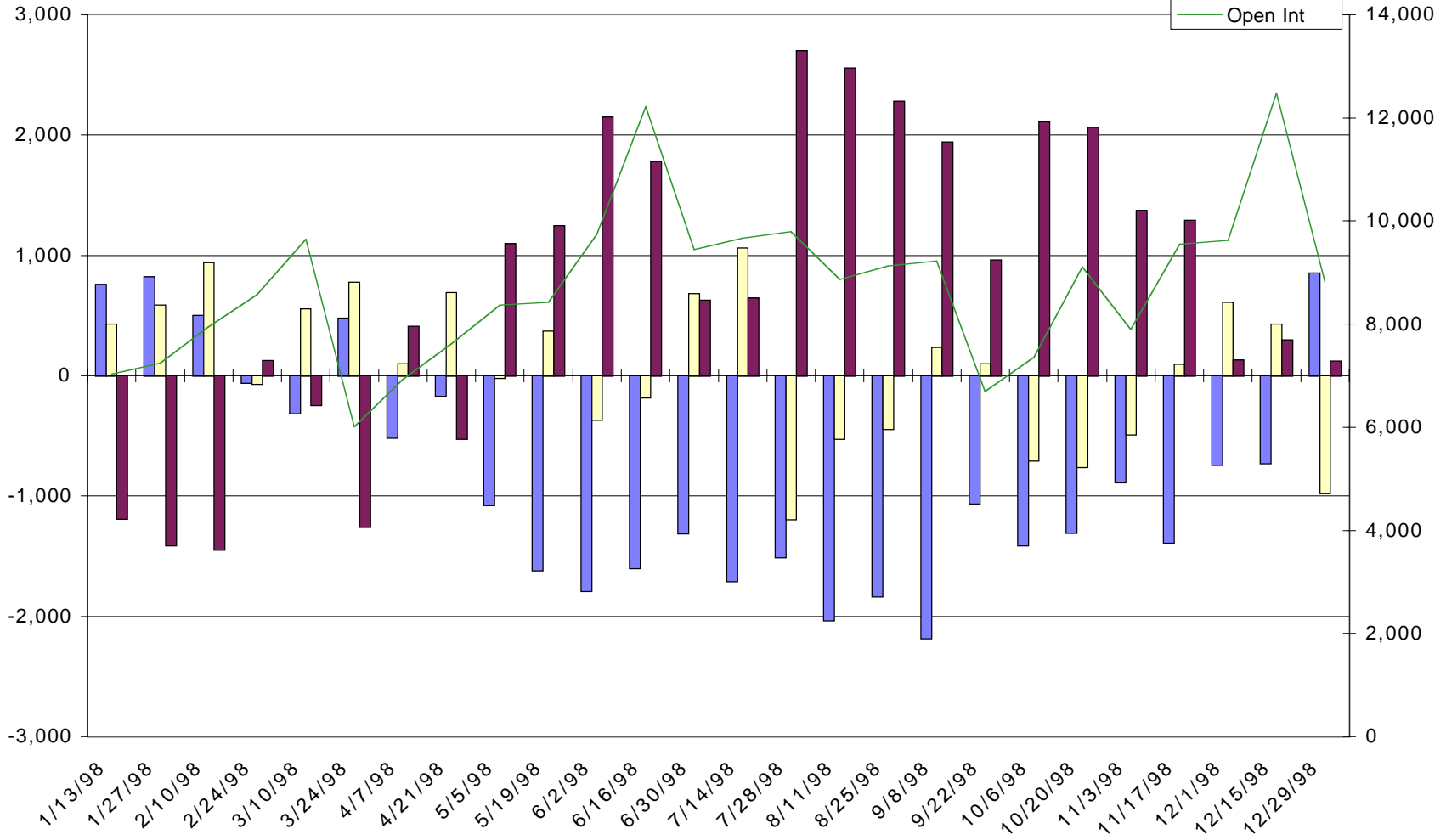


(ND, cme) NASD 100 Index - Net Commitments of Traders



21



-- Large Speculators --

---- Commercial ----

-- Small Speculators --

Open

	Long	Short	Bullish	Long	Short	Bullish	Long	Short	Bullish	Interest
11/3/98	1,720	2,604	40%	5,460	4,088	57%	720	1,208	37%	7,900
11/17/98	1,728	3,115	36%	6,182	4,890	56%	1,644	1,549	51%	9,554
12/1/98	2,308	3,048	43%	5,318	5,186	51%	2,003	1,395	59%	9,629
12/15/98	2,395	3,124	43%	7,142	6,842	51%	2,949	2,520	54%	12,486
12/29/98	2,986	2,132	58%	5,087	4,965	51%	748	1,724	30%	8,821