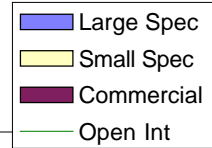
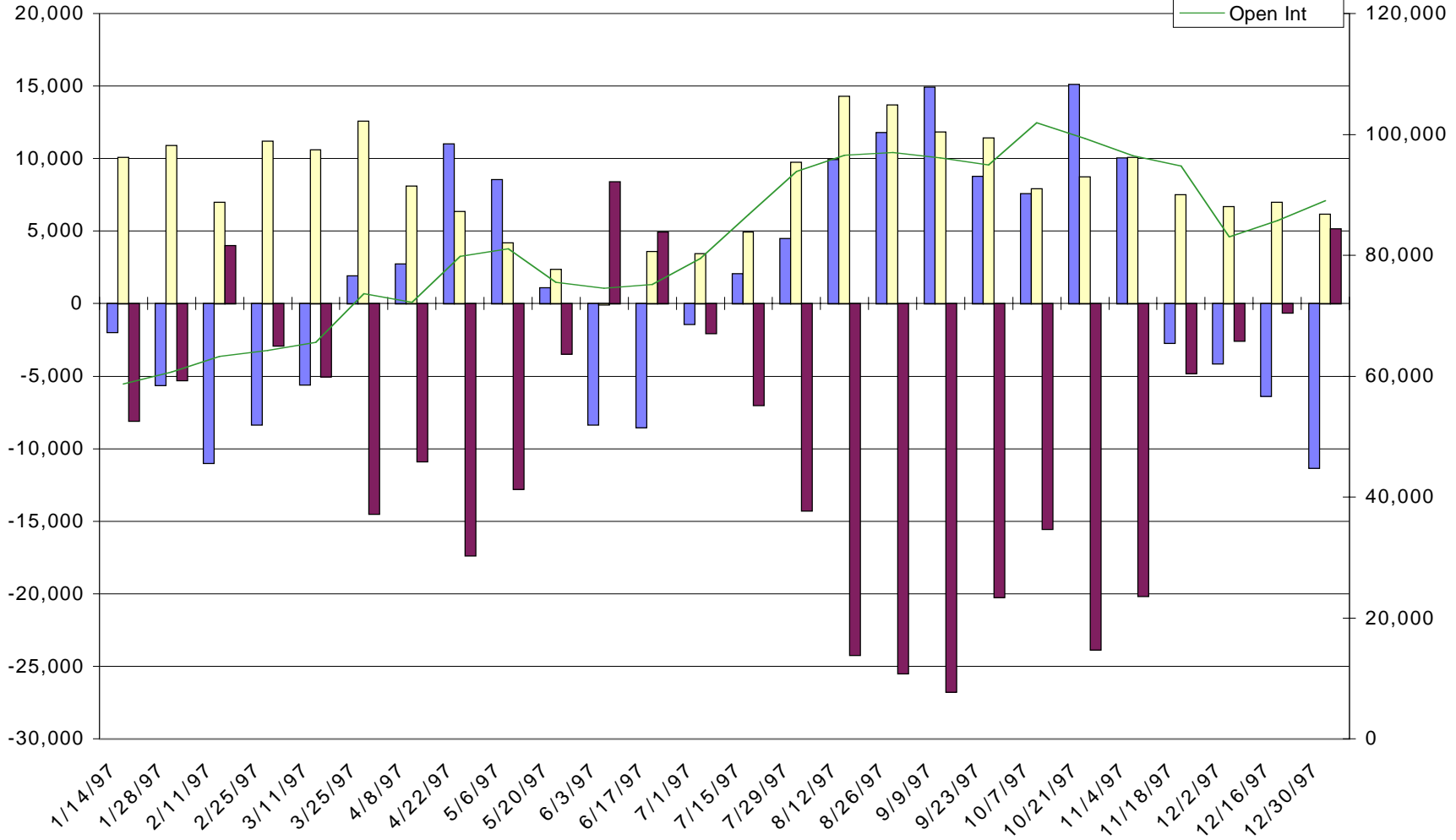


# (W) Wheat, Chicago - Net Commitments of Traders



34



**-- Large Speculators --**

**---- Commercial ----**

**-- Small Speculators --**

**Open**

	<b>Long</b>	<b>Short</b>	<b>Bullish</b>	<b>Long</b>	<b>Short</b>	<b>Bullish</b>	<b>Long</b>	<b>Short</b>	<b>Bullish</b>	<b>Interest</b>
11/4/97	22,096	12,040	65%	38,007	58,151	40%	36,365	26,277	58%	96,468
11/18/97	15,324	18,024	46%	43,140	47,937	47%	36,314	28,817	56%	94,778
12/2/97	15,374	19,501	44%	35,647	38,199	48%	31,978	25,299	56%	82,999
12/16/97	14,728	21,098	41%	38,308	38,920	50%	32,705	25,723	56%	85,741
12/30/97	14,231	25,533	36%	43,858	38,712	53%	30,918	24,762	56%	89,007