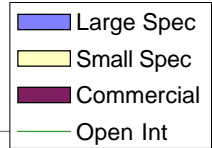
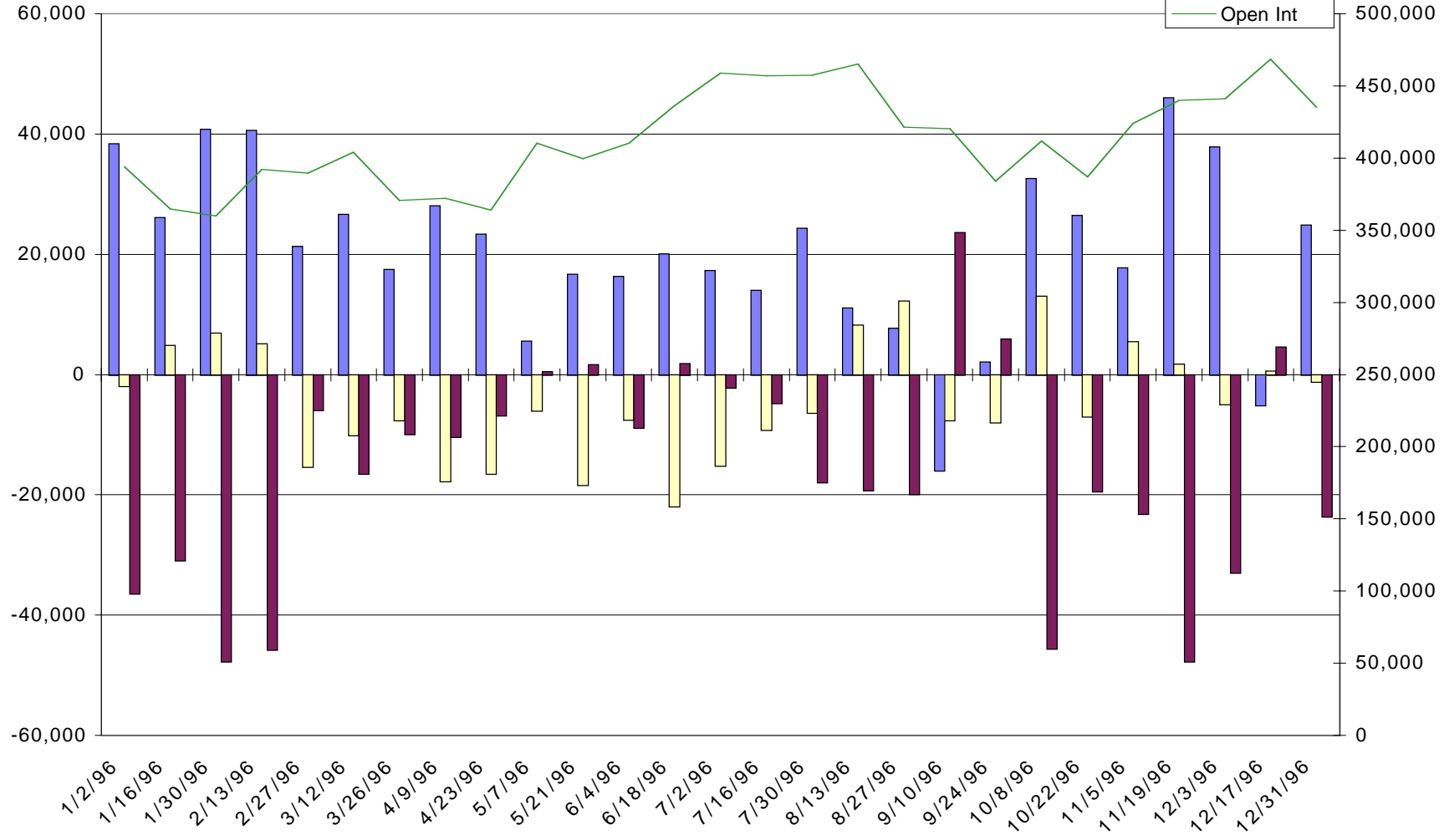


(US) Treasury Bond - Net Commitments of Traders



32



-- Large Speculators --

---- Commercial ----

-- Small Speculators --

Open

	Long	Short	Bullish	Long	Short	Bullish	Long	Short	Bullish	Interest
11/5/96	62,016	44,287	58%	271,651	294,815	48%	90,419	84,984	52%	424,086
11/19/96	72,940	26,924	73%	264,590	312,311	46%	102,275	100,570	50%	439,805
12/3/96	64,952	27,069	71%	275,969	308,944	47%	100,264	105,172	49%	441,185
12/17/96	70,470	75,596	48%	308,018	303,472	50%	89,992	89,412	50%	468,480
12/31/96	59,289	34,453	63%	302,806	326,405	48%	73,035	74,272	50%	435,130