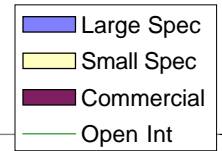
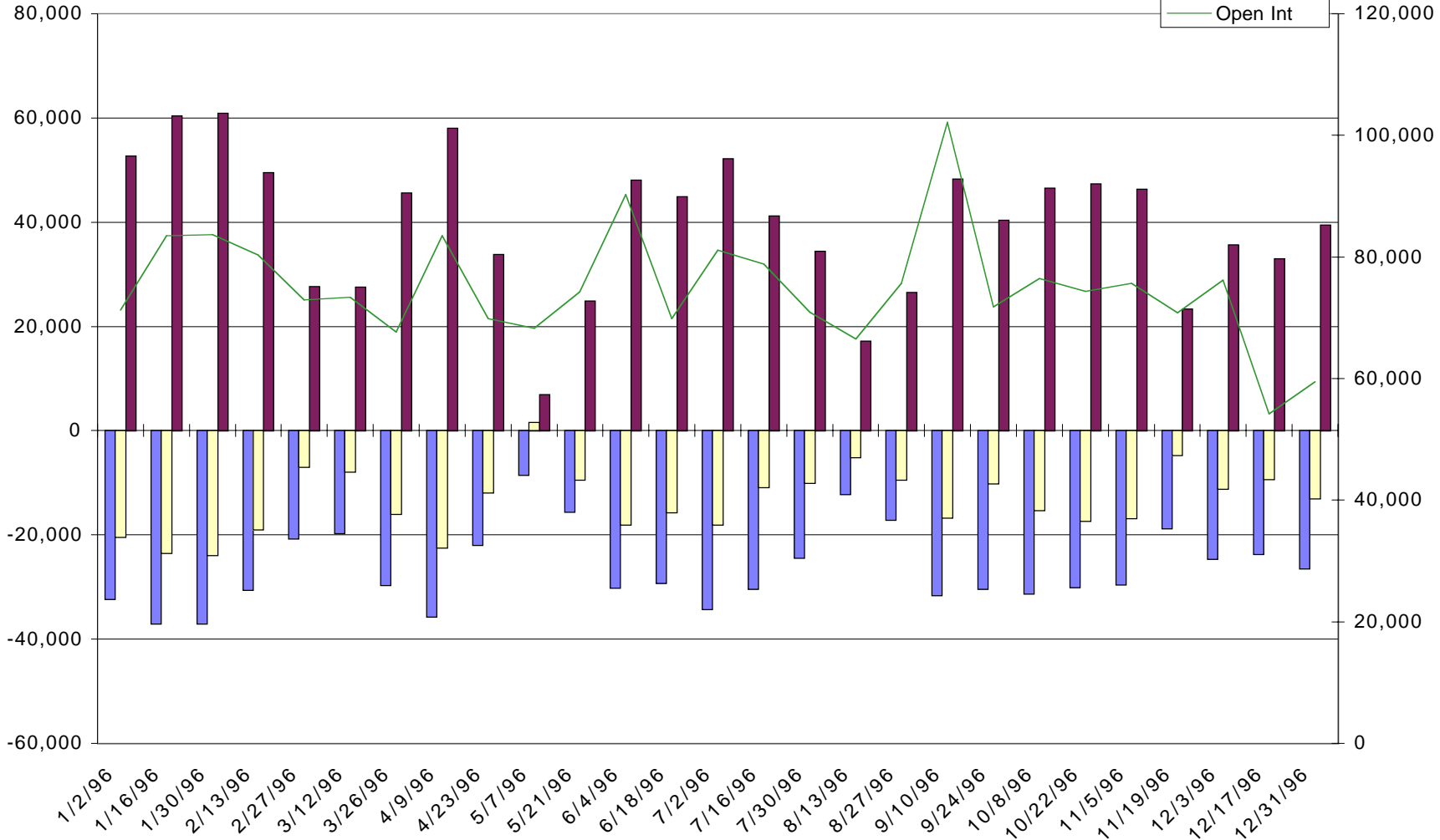


(JY) Japanese Yen - Net Commitments of Traders



16



-- Large Speculators --

---- Commercial ----

-- Small Speculators --

Open

	Long	Short	Bullish	Long	Short	Bullish	Long	Short	Bullish	Interest
11/5/96	1,198	30,720	4%	63,301	16,958	79%	11,130	27,951	28%	75,629
11/19/96	2,331	21,024	10%	52,563	29,193	64%	15,943	20,620	44%	70,837
12/3/96	848	25,438	3%	60,591	24,883	71%	14,749	25,867	36%	76,188
12/17/96	1,302	25,010	5%	42,968	9,944	81%	9,962	19,278	34%	54,232
12/31/96	1,783	28,258	6%	48,449	8,955	84%	9,259	22,278	29%	59,491