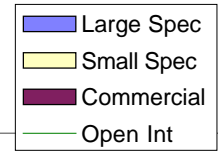
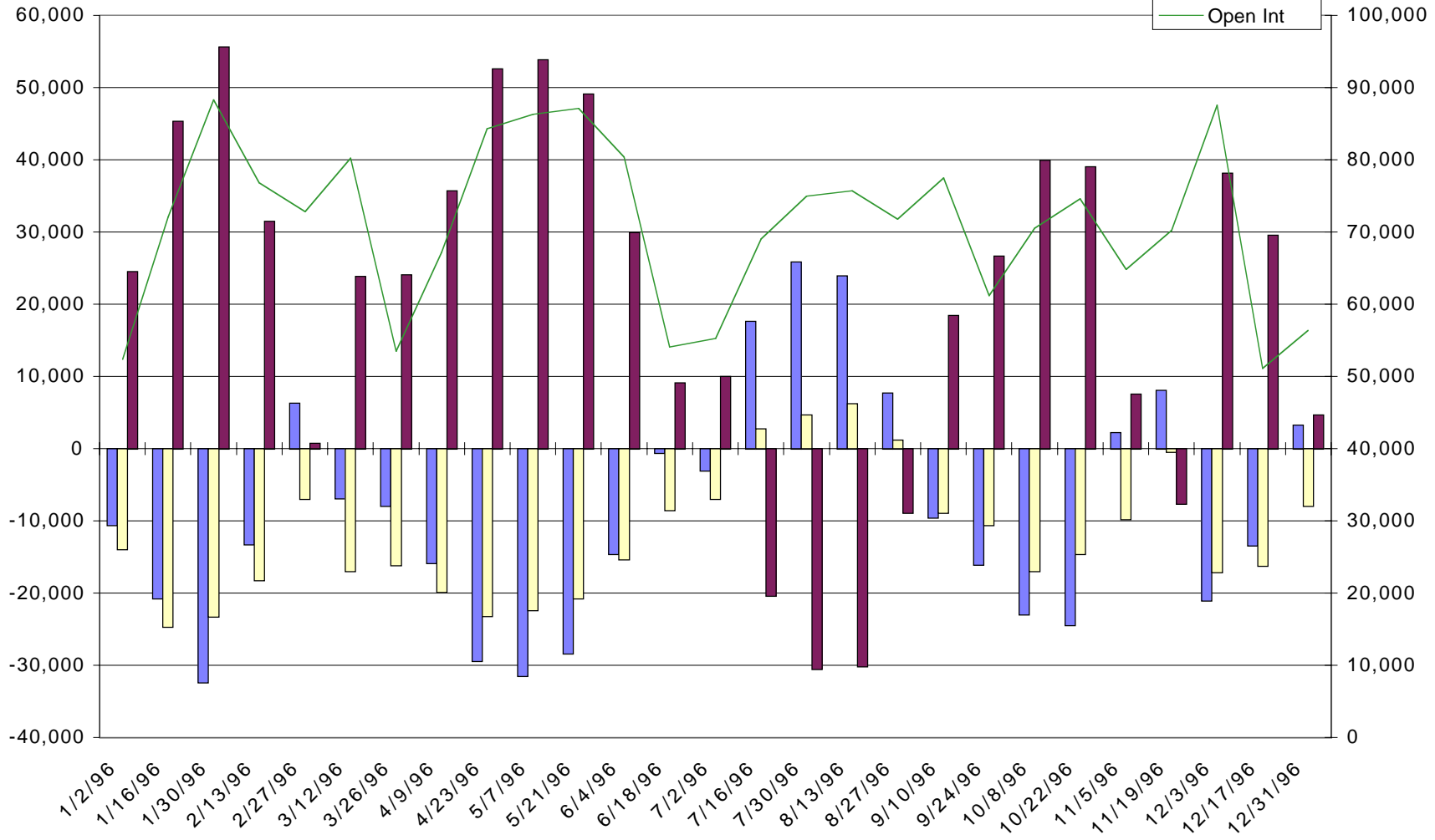


(DM) Deutsche Mark - Net Commitments of Traders



9



-- Large Speculators --

---- Commercial ----

-- Small Speculators --

Open

	Long	Short	Bullish	Long	Short	Bullish	Long	Short	Bullish	Interest
11/5/96	13,334	11,104	55%	37,313	29,748	56%	14,166	23,961	37%	64,813
11/19/96	16,264	8,162	67%	35,079	42,738	45%	18,889	19,332	49%	70,232
12/3/96	6,446	27,474	19%	67,190	29,039	70%	13,919	31,042	31%	87,555
12/17/96	2,955	16,352	15%	39,692	10,107	80%	8,437	24,625	26%	51,084
12/31/96	10,883	7,643	59%	30,617	25,961	54%	14,852	22,748	40%	56,352