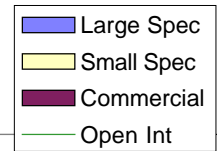
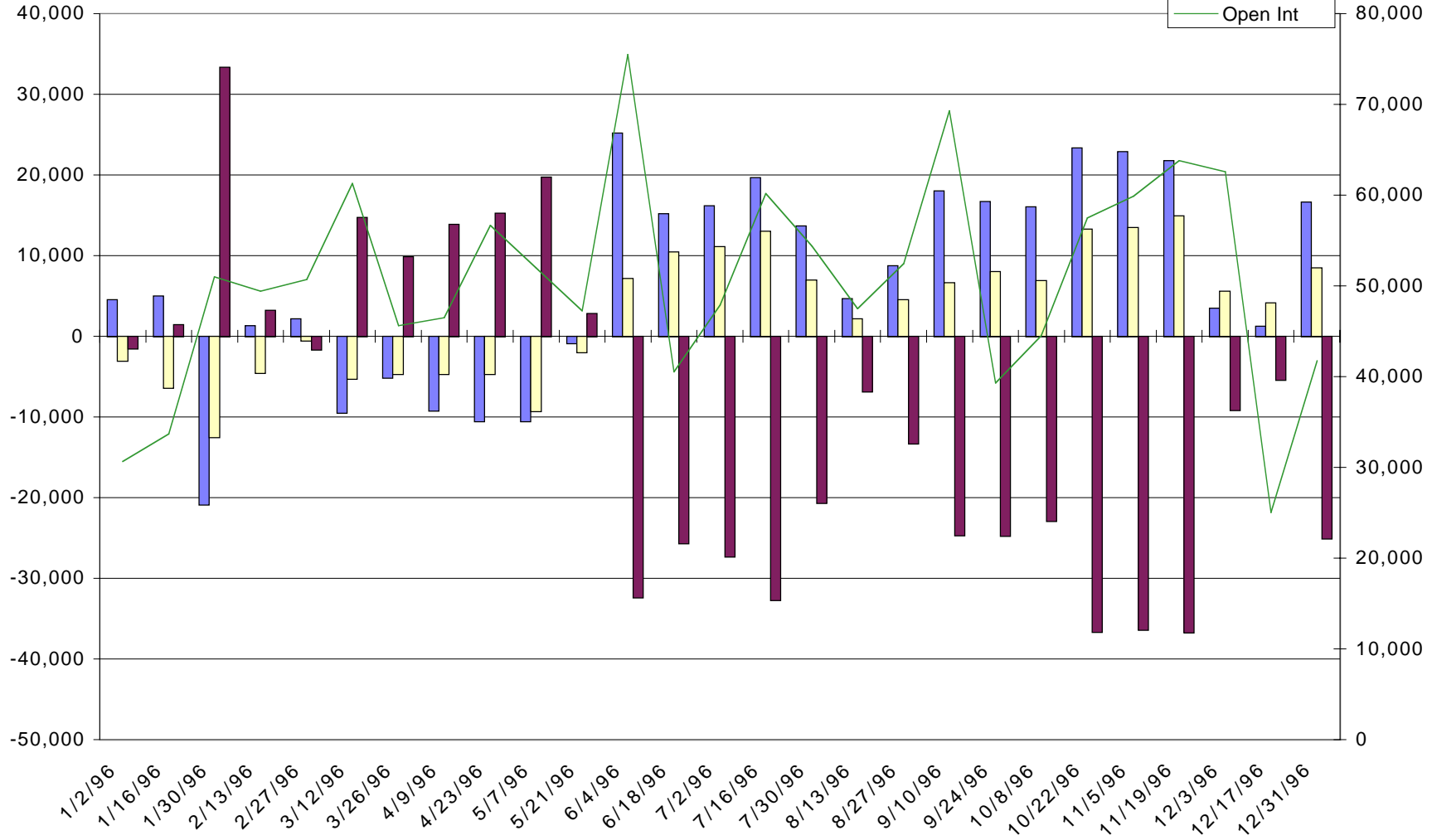


(BP) British Pound - Net Commitments of Traders



3



-- Large Speculators --

---- Commercial ----

-- Small Speculators --

Open

	Long	Short	Bullish	Long	Short	Bullish	Long	Short	Bullish	Interest
11/5/96	24,265	1,355	95%	14,452	50,831	22%	21,140	7,671	73%	59,857
11/19/96	22,551	801	97%	17,600	54,281	24%	23,677	8,746	73%	63,828
12/3/96	11,420	7,901	59%	31,400	40,512	44%	19,739	14,146	58%	62,559
12/17/96	4,706	3,428	58%	7,681	13,073	37%	12,648	8,534	60%	25,035
12/31/96	17,524	893	95%	9,107	34,203	21%	15,118	6,653	69%	41,749