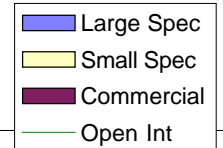
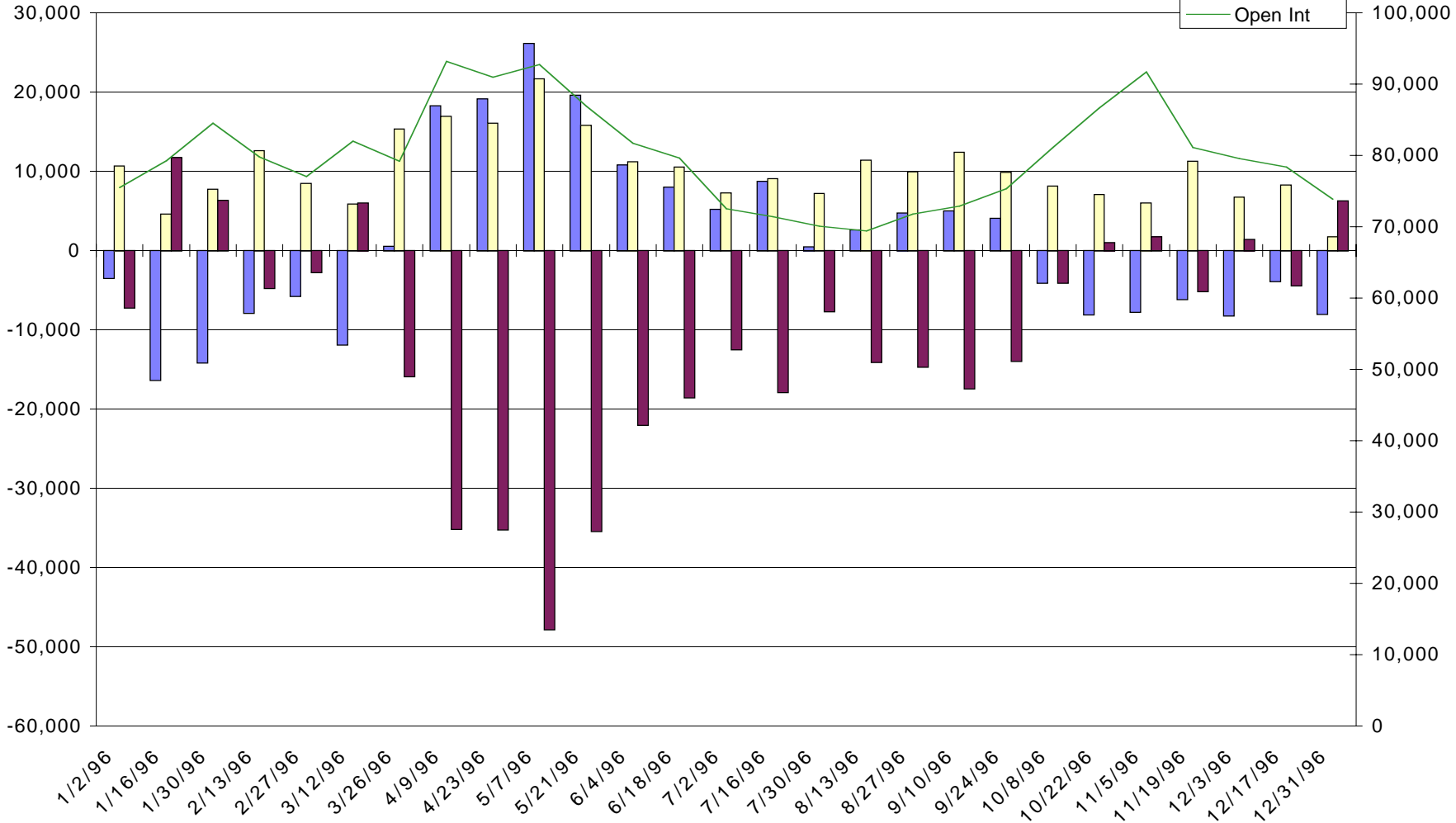


(BO) Soybean Oil - Net Commitments of Traders



2



-- Large Speculators --

	Long	Short	Bullish
11/5/96	10,068	17,774	36%
11/19/96	4,979	11,097	31%
12/3/96	6,391	14,566	30%
12/17/96	8,952	12,836	41%
12/31/96	7,528	15,538	33%

---- Commercial ----

	Long	Short	Bullish
11/5/96	49,669	47,946	51%
11/19/96	41,817	46,966	47%
12/3/96	42,506	41,091	51%
12/17/96	37,862	42,255	47%
12/31/96	40,671	34,410	54%

-- Small Speculators --

	Long	Short	Bullish
11/5/96	31,972	25,989	55%
11/19/96	34,308	23,041	60%
12/3/96	30,633	23,873	56%
12/17/96	31,574	23,297	58%
12/31/96	25,686	23,937	52%

Open Interest

11/5/96	91,709
11/19/96	81,104
12/3/96	79,530
12/17/96	78,388
12/31/96	73,885