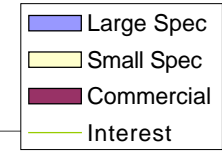
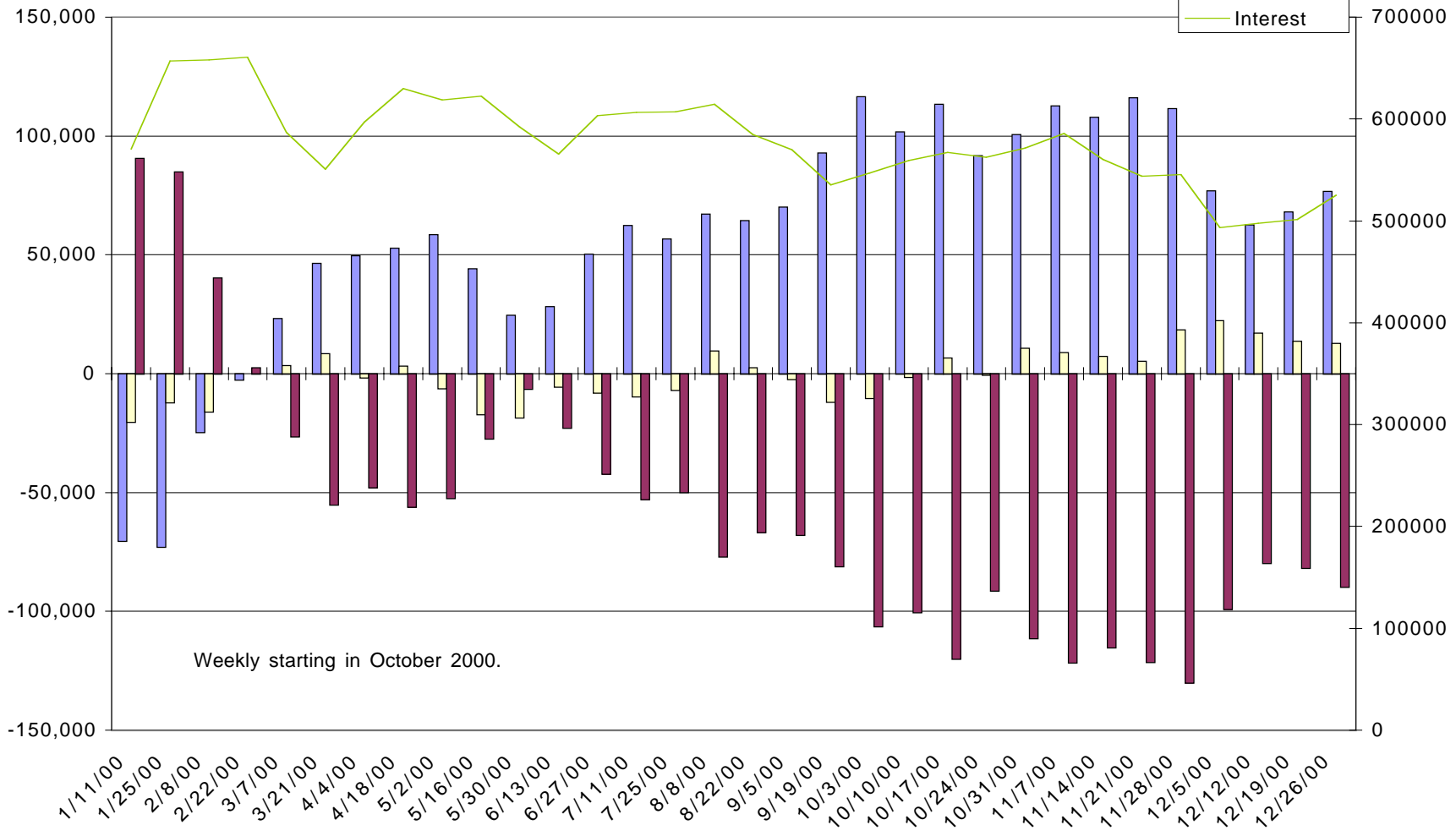


# (TY, cbt) 10 Year Treasury Notes - Net Commitments of Traders



46



**-- Large Speculators --**

**---- Commercial ----**

**-- Small Speculators --**

**Open**

	<b>Long</b>	<b>Short</b>	<b>Bullish</b>	<b>Long</b>	<b>Short</b>	<b>Bullish</b>	<b>Long</b>	<b>Short</b>	<b>Bullish</b>	<b>Interest</b>
11/28/00	135,091	23,484	85%	271,087	401,127	40%	136,637	118,204	54%	545,222
12/5/00	98,585	21,737	82%	251,125	350,233	42%	140,701	118,441	54%	493,524
12/12/00	77,462	14,763	84%	288,100	367,862	44%	128,580	111,517	54%	497,529
12/19/00	84,038	15,872	84%	298,238	379,960	44%	117,267	103,711	53%	501,128
12/26/00	91,759	15,011	86%	317,787	407,375	44%	113,180	100,340	53%	525,442