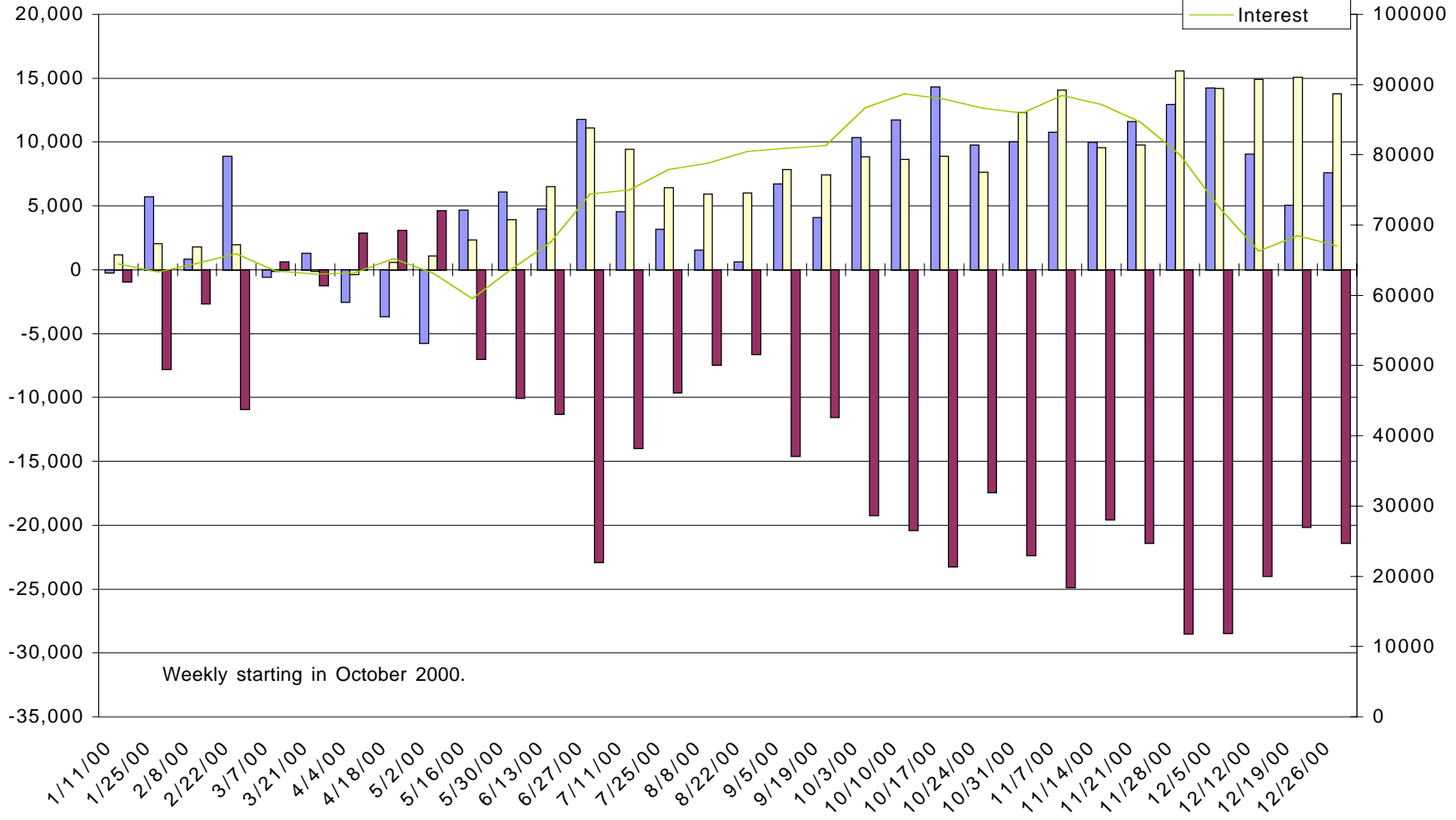


(KW, kcbt) Wheat, Kansas City - Net Commitments of Traders



25



-- Large Speculators --

---- Commercial ----

-- Small Speculators --

Open

	Long	Short	Bullish	Long	Short	Bullish	Long	Short	Bullish	Interest
11/28/00	14,402	1,469	91%	37,021	65,517	36%	25,148	9,585	72%	80,021
12/5/00	16,735	2,484	87%	26,887	55,342	33%	26,678	12,474	68%	72,548
12/12/00	14,614	5,543	73%	22,757	46,713	33%	26,014	11,129	70%	66,318
12/19/00	13,877	8,810	61%	24,857	44,996	36%	26,724	11,652	70%	68,466
12/26/00	15,042	7,456	67%	24,725	46,094	35%	25,438	11,655	69%	67,035